



MONTHLY MEMBERSHIP PROGRESS REPORT

District 5M 13

Results as of: 11/30/2014

GMT: DENNIS STEVENSON

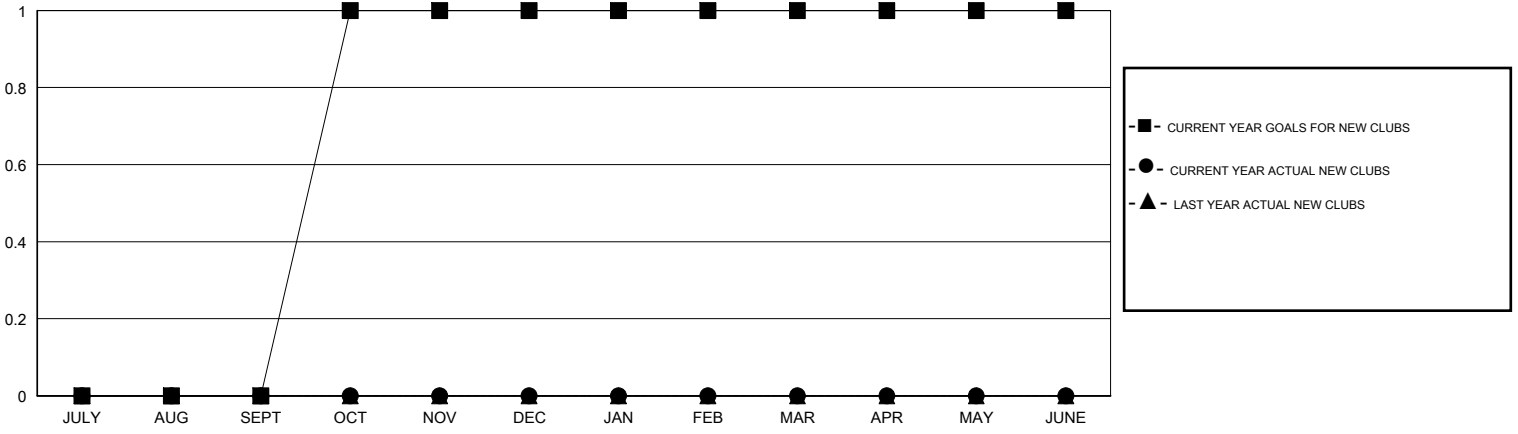
LOCATION MANITOBA

GMT CA 2

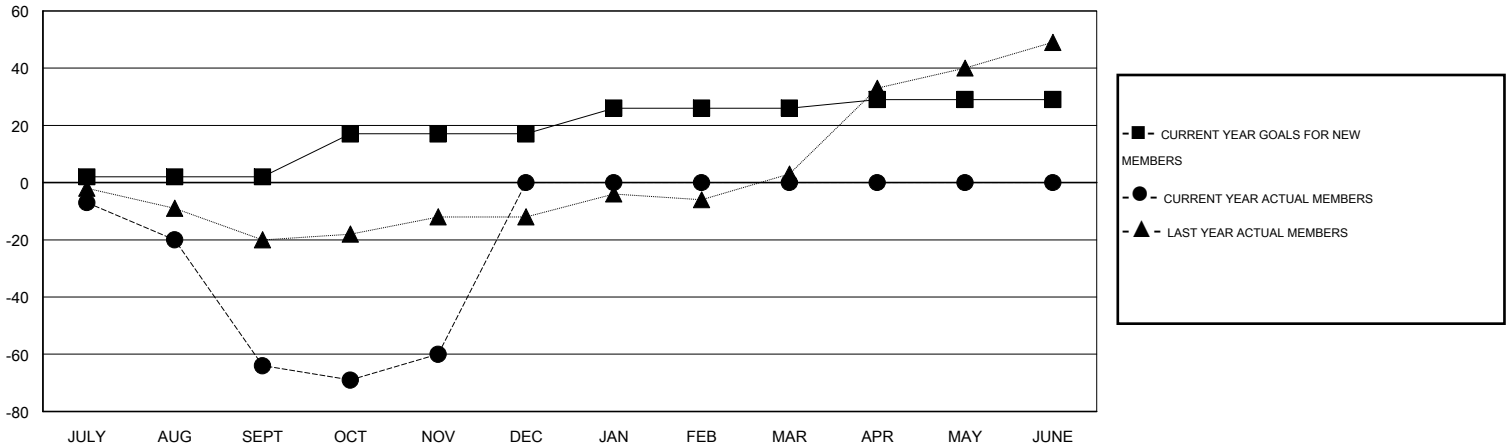
Clubs				
RESULTS FOR 2014-2015				
QUARTER	NEW CLUB GOAL	NEW CLUBS	DROPPED CLUBS	NET GAIN/LOSS
JULY/AUG/SEPT	0	0	2	-2
OCT/NOV/DEC	1	0	0	0
JAN/FEB/MAR	0	0	0	0
APR/MAY/JUNE	0	0	0	0

Members				
RESULTS FOR 2014-2015				
QUARTER	NEW MEMBER GOAL	CHARTER AND NEW MEMBERS ADDED	DROPPED MEMBERS	NET GAIN/LOSS
JULY/AUG/SEPT	2	3	67	-64
OCT/NOV/DEC	15	19	15	4
JAN/FEB/MAR	9	0	0	0
APR/MAY/JUNE	3	0	0	0

GOALS AND ACTUAL NEW CLUBS CUMULATIVE



GOALS AND ACTUAL MEMBERS CUMULATIVE



DROPPED CLUBS: 2	10 CLUBS OF 61 ADDED 1 OR MORE NEW MEMBERS	GENDER DISTRIBUTION MALE 948 (76.89%) FEMALE 285 (23.11%)
DROPPED MEMBERS DECEASED 5 CLUB CANCELLED 0 OTHER 77 TOTAL 82	CLICK HERE FOR HEALTH ASSESSMENT DATA	FAMILY UNIT MEMBERS 199 HEAD OF HOUSEHOLD 99 NON-HEAD OF HOUSEHOLD 100